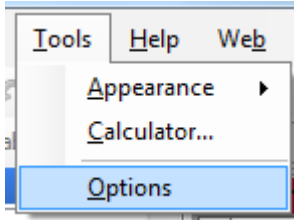


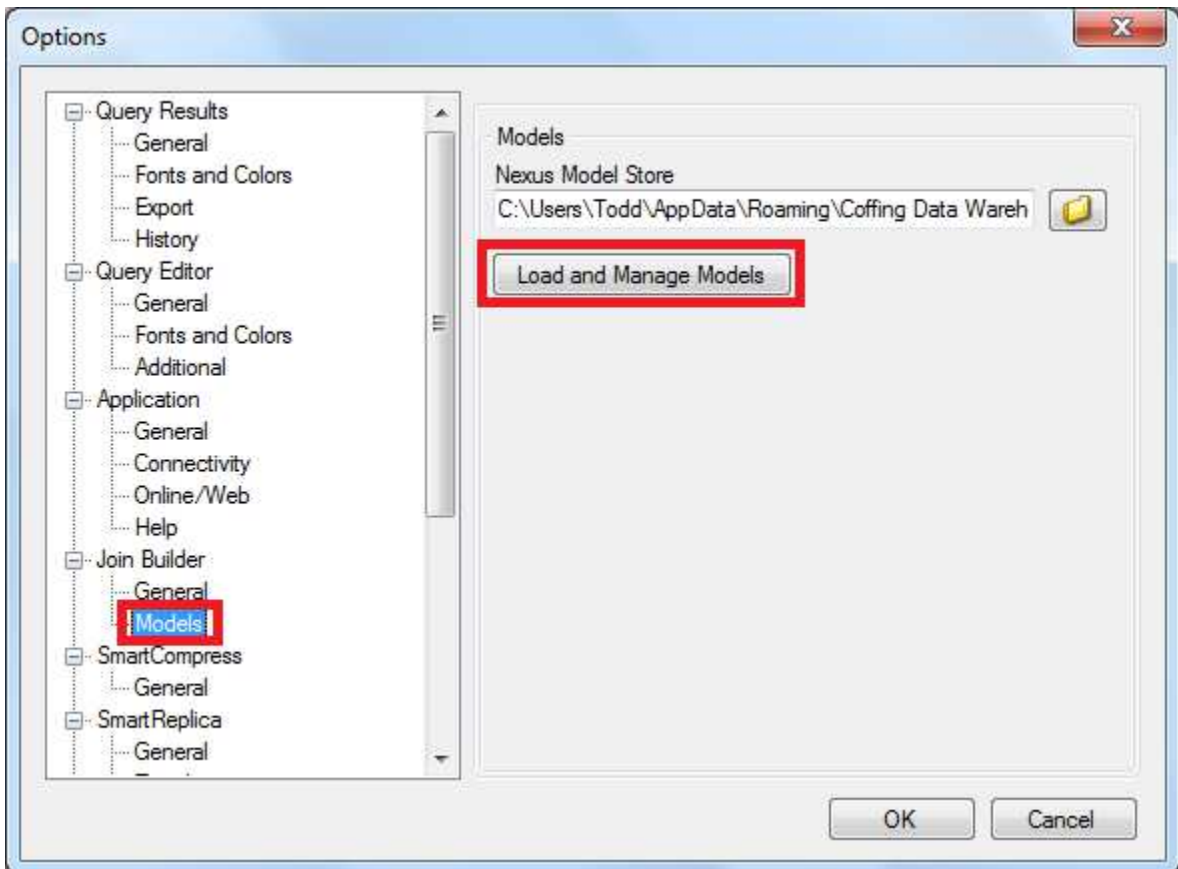
How to Use the Nexus Model Loader

Loading a Model

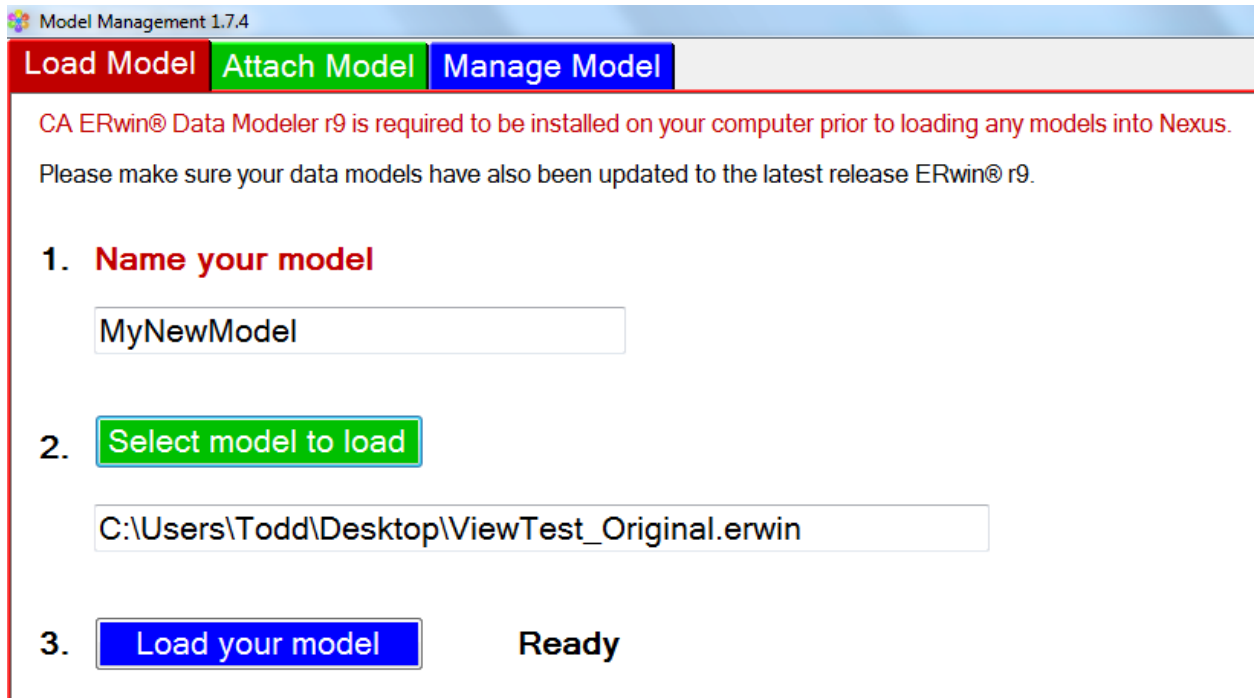
1. Click on Tools > Options



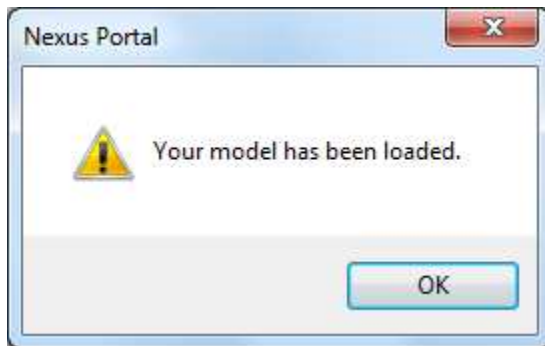
2. Under the "Join Builder" tree node, click on the "Models" node. Here you can change the location of your Nexus Model Store which is where all of your Nexus models are saved to and sourced from.
3. To load a new ERwin model click on the "Load and Manage Models" button.



4. Enter a name for your model.
5. Click on the “Select model to load” button and select your ERwin model to load.
6. Finally, click the “Load your model” button.

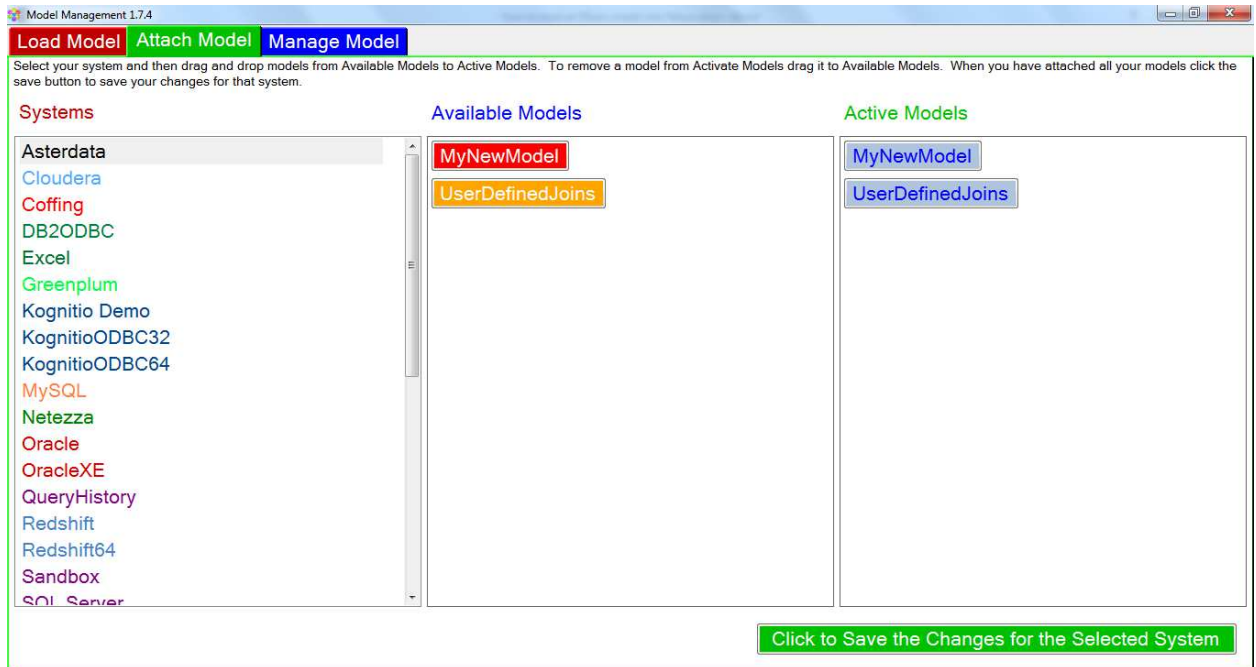


7. When you are finished, you should see the following dialog. Click “OK”.

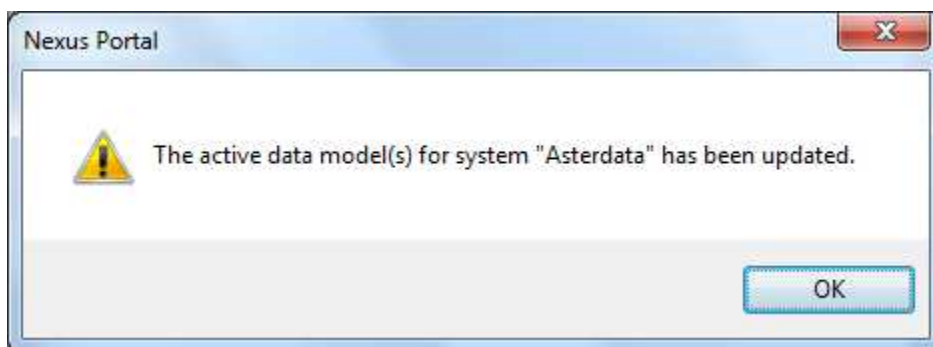


Attaching a Model

1. Click on the “Attach Model” tab.
2. Select the system you want to attach your model to from the left tree.
3. Drag your model from “Available Models” to “Active Models” (they will turn blue).



4. Finally, click on the “Click to Save Changes for the Selected System” button. You should see the following confirmation for the system you attached the models to. Your model is saved to an encrypted database which can be read by Nexus and the Super Join Builder.



You may attach multiple models to the same system, however, be aware that duplicates in your models will be reflected in the Super Join Builder.

Managing the Model

1. Click on the “Manage Model” tab.
2. To delete a model right-click on it and select “Delete”
3. To change where you save your final models (for example, you may want to save them to a shared drive) click on the “folder” icon to select your new directory and the “save” icon to save it.

